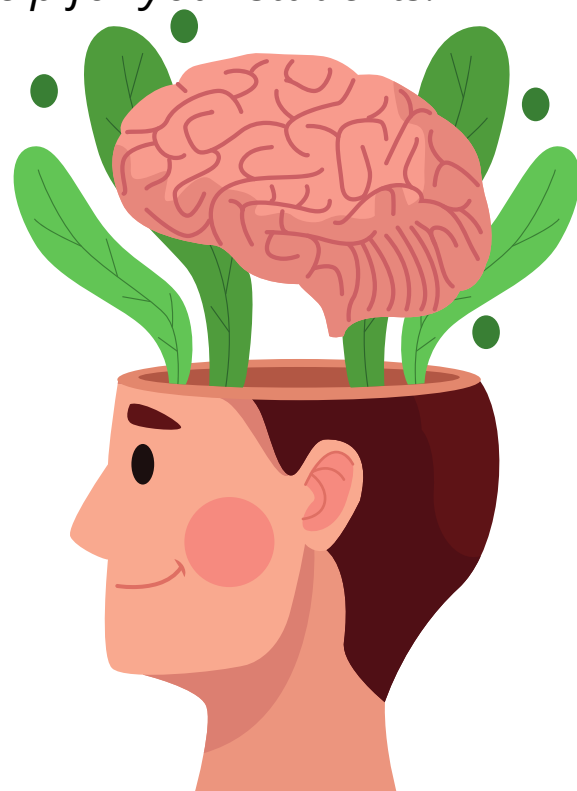


Psychosis and Young People: What Every Educator Needs To Know

*Do you know that psychosis most commonly emerges in late adolescence or young adulthood?
Know what to look for so you can get help for your students!*

- This FREE one-hour interactive class was developed specifically for educators by an educator.
- Take the class whenever it fits your schedule.
- Optional: Earn 1 FREE PDU/CEU*



**To access the class, click the link
below or scan the QR code**

<https://view.genially.com/6851e85b428026624616e40e>



*CONTACT Isabella Orozco at orozcoi@ohsu.edu to register for final quiz
and for CEU/PDU certificate